

User Instructions

Rise Easy Bed Aid

G21808 Single 2'6" to 3'0"

G21819 Double 4'6" to 5'0"

General Safety Warning

Please ensure these instructions are fully read and understood before use. Retain in a safe place for future reference.

Intended Use

The Rise Easy Bed Aid is designed to assist the user in rising from, or sitting up in bed, without interfering with bed clothes. It is available in two sizes and is suitable for most beds including profiling beds. It can be used on either the left or right hand side of the bed.

Safety Precautions

Do not place obstructions (for example a bedside cabinet) adjacent to the bed rail. It is important that the arm is free to be moved away from the bed.

Do not use if feet of bed are too large to fit onto base plate pads.

It is recommended that this device is only used for clients up to 127Kg (20st).

MANUAL HANDLING GUIDANCE

During installation, it is necessary to lift the bed head onto the bed rail base plates. Please ensure that the person(s) installing the device is capable of doing this operation safely using the correct manual handling techniques and employ caution when lifting the bed.

Assembly & Installation Instructions

1 - Remove all parts from the packaging. Check all parts are undamaged.

2 - Ensuring there are no obstructions (E.g. Bed side cabinet) on the side which the client will exit the bed; move the bed approximately 300mm (12") from the wall

Assembly Instructions continued.

3. - Place the 2 base plate sections on the floor and push both silver coloured connecting rods into both tubes on base plates to the bed size required. Note: DO NOT PULL TUBE PAST THE WARNING DIMPLES

4 - Slide assembly behind the head section of the bed and align base plates to bed castors/feet.

5 - Lift the bed and slide assembly under the castors/feet of the bed. Lower bed onto the base plate ensuring the castors/feet sit onto the base plate. Carefully move the bed/Base plate assembly back to the wall.

6 - The hand rail may now be fitted on the appropriate side of the bed. Slide the handrail over the location tube and push down until it hits the location stop pin.

7. Check that the bed rail feels secure and can be swung away from the bed.

Diagram 1

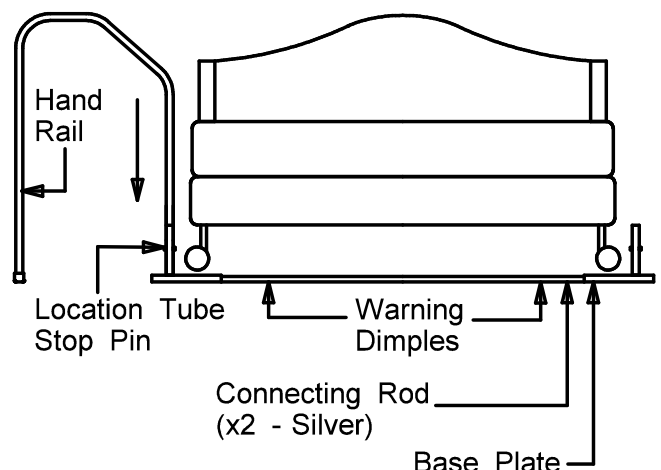




Fig 1



Fig 2



Fig 3

Using the Rise Easy Bed Aid

The Rise Easy Bed aid is designed such that the weight of the bed and client, applied on to the base plates, counterbalances the client during standing.

As it does not attach to the bed frame, it can be used on Divan beds (including sprung base), slatted beds and profiling/electrically adjustable beds provided the feet or castors can be fitted onto the base plate pads (within the sizes indicated; up to 5ft).

The normal "rest" position for the hand rail is shown in Fig 1, with the hand rail adjacent to the bed side. In this position, the bed rail may be used to assist the client to raise from lying to sitting and to aid repositioning in the bed eg. Turning. Please note: it is not intended to act as a cot-side to prevent the client from falling out of bed.

When standing from the bed, the hand rail can be left in the "rest" position against the bed, or swung out away from the bed as shown in Fig 2 and Fig 3, depending on the preferences of the client. When in the "swing away" position, the client should try to place their weight vertically down through the hand rail.

Cleaning Instructions

Clean regularly, wiping down with a mild detergent or disinfectant solution.

Do not use an abrasive detergent, cleaner or cloth to clean or dry this product.

NOTTINGHAM REHAB SUPPLIES
Clinitron House, Excelsior Road,
Ashby Park, Ashby-de-la-Zouch,
Leicestershire, LE65 1JG, United Kingdom

Tel: 0845 120 4522

Fax: 0845 121 8112

Int'l: +44(0) 1530 418378

Email: customerservice@nrs-uk.co.uk

For further details of Nottingham Rehab Supplies' extensive range of equipment and aids for daily living please visit our website www.nrs-uk.co.uk

www.nrs-uk.co.uk

